

GREAT CW KEYING FROM YOUR USB PORT OR YOUR FIST, WinkeyerUSB

RUNNING BY ITSELF OR CONNECTED TO YOUR FAVORITE LOGGING APPLICATION, WKUSB CAN'T BE BEAT !



When KIEL introduced WinKeyer 6 years ago, it changed the way Windows™ based applications generate CW. Clean accurate Morse without pauses and mis-timed dits and dahs. WinkeyerUSB is our latest CW keyer based on the new KIEL Winkeyer2 IC. Just plug it in to your USB port and enjoy accurate transmitter keying with your Windows™ based logging or other ham radio software package. Two optically isolated output ports allow you to switch between two transmitters on command. With the HV option you can key vacuum tube transmitters ! In addition, Winkeyer2 has paddle inputs so you can break-in and send manually at any time. WinkeyerUSB also has a rotary speed control for fast WPM changes. WinkeyerUSB is backwards compatible to existing applications that already support Winkeyer.

WinkeyerUSB is also a great standalone Morse keyer. Based on the K12 keyer, it has plenty of features. With a built in battery pack and standby current of 1uA it will run for a long time. Like most keyers, commands can be entered on the paddles, but KIEL makes it easier. WK2MGR is a free Windows™ app that allows you to load messages and setup your keyer quickly and easily. Just plug in, tweak, unplug and away you go. A built in sidetone speaker and four message pushbuttons are other nice features.

Want to jump on the Winkeyer bandwagon ? Winkeyer2's interface is in the public domain and fully documented, no restrictions, anyone can write an interface. The host PC communicates to Winkeyer2 over a USB VCP interface which acts like a standard serial port. No special USB interface code is required. KIEL offers example C source code, a test application, and a WIN32 interface DLL at no charge. KIEL sells WKUSB in kit form, an assembled and tested version is also available on request.

WKUSB: \$64 IN KIT FORM

BOTH INCLUDE USB CABLE AND DRIVER CDROM

WKUSB-HV: \$74 IN KIT FORM

GOTO WWW.KIEL.COM FOR MORE INFORMATION

Applications that Support Winkeyer

- NIMM Logger
- WriteLog
- DXbase
- StarLog
- Winlog32
- RCKLog
- LuxLog
- SD by E15D1
- TRX-Manager
- MixW
- HamRadio Deluxe
- Win-EQF
- Logger32
- RoverLog
- Win-Test
- LOGic 8
- XMLog
- MacLogger Deluxe
- AClog by N3FJP
- DXLab Suite
- XMLog
- NZLOG

More on the way

Winkeyer USB Specifications

- USB Interface with Virtual Serial Com Port Driver
- Iambic CW Paddle Connector on Back Panel
- Two Key Output Ports each with PTT output
- Outputs are Optically Isolated RCA Phono Jacks
- 50V Keying Standard, 300V High Voltage Keying Optional
- Adjustable PTT Lead in and Tail Delays (0 to 2.5 sec)
- Adjustable Speed 5-99 WPM
- Adjustable Weighting (2% increments)
- Adjustable Dit/Dah Ratio
- Adjustable Farnsworth Spacing
- Adjustable Keying Compensation (0-31 mSec)
- Autospace On/Off
- Sidetone Output with Adjustable Frequency
- Paddle Only Sidetone On/Off
- Dit/Dah Memory Control
- Adjustable First Dit/Dah correction
- Iambic A, B, Ultramic & "Bug" modes
- Adjustable Paddle Switchpoint
- Speed Pot Interface
- Adjustable speed pot range
- 128 Character Host Input Buffer
- Standalone Keyer Mode
- Embedded Commands
- HSCW, QRSS and Beacon Capability
- Internal Battery Holder (3 AAA cells)
- Active Current Draw: < 2 ma
- Power Down Sleep < 1uA
- Top Mounted Message Pushbuttons
- Built In Message Memory Storage
- Painted Enclosure With Silkscreen

Other Great Kits Available From WWW.KIEL.COM



▶ WINKEYER2 SERIAL

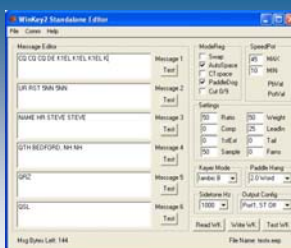


▶ K40 CW KEYBOARD

▶ K40 RTTY ADDON



▶ K12 ECONOMY KEYS



▶ WK2MGR WK2 KEYS EDITOR (FREWARE)

Contact Information

KIEL Systems
43 Meadowcrest Drive
Bedford, NH 03110 USA
Email: kiel@kiel.com
Web: WWW.KIEL.COM

